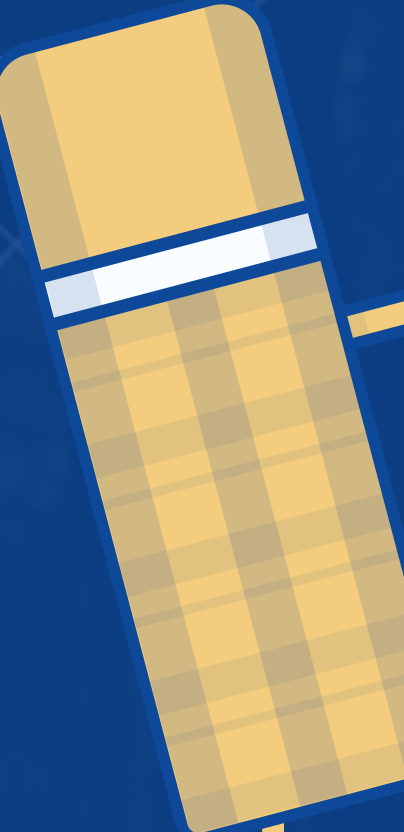


11 - 17.10.2019

**OUTDOOR EDUCATION  
ENCYCLOPEDIA  
FOR YOUTH  
WORKERS**


Seminar in Nachrodt-Wiblingwerde,  
Germany





Modern lifestyle of young people is vibrant, it changes constantly, and young people become more dependent on modern technologies, part of the metropolis, which is projected on young people wellbeing, the project encourages them to get closer to nature.

The project logic is based on the experiential learning cycle, participants will receive concrete experience, will conduct reflective observation, will carry out abstract conceptualization, and finally will actively experiment. The integral part of the project is a hiking challenge, hosting organization has implemented several projects in this national park, using comparable methodologies, and the experience of implemented projects in this national park is very positive. After the project participants will reflect on the experience, this process will be divided into several stages, the process and its results will be recorded.



The team will ensure that participants have an opportunity to explore and deepen knowledge on the efficiency of outdoor education by offering open space for sharing experiences and practices amongst each other. Participants explore outdoor education as an inclusive tool for youth work in their organization. The entire project will be documented for a greater impact of outcomes



# STRUCTURE

- **Team-building Activities**
- **Outdoor education theory**
- **Sharing experiences amongst participants**
- **Recording and documenting results, outcomes**
- **Developing follow-up activities**
- **Developing high-quality dissemination of the result**
- **Developing future cooperation**
- **Developing encyclopedia**



# HOW TO SURVIVE OUTDOORS

- PROMOTION OF OUTDOOR EDUCATION AMIDST YOUTH WORKERS OF THE PARTNER ORGANIZATION AND BEYOND
- PROMOTION OF OUTDOOR EDUCATION AS AN INCLUSIVE TOOL IN YOUTH WORK
- EQUIPMENT OF PARTICIPANTS WITH SKILLS FOR OUTDOOR EDUCATION INCLUDING PREPARATION OF ACTIVITIES, RISK ASSESSMENT, HEALTH AND SAFETY MEASURES, AND OUTDOOR METHODS
- REFLECTING ON THE LEARNING BENEFITS OF USING THE OUTDOORS: HEALTH, LIFESTYLE, CONNECTING TO NATURE, PROTECTING THE ENVIRONMENT, FIGHTING GLOBAL WARMING
- PROMOTING OUTDOOR EDUCATION AS AN INCLUSIVE TOOL IN YOUTH WORK
- REFLECTING AND SHARING BEST PRACTICES OF PARTNER ORGANIZATION
- INCREASING YOUTH PARTICIPATION THROUGH OUTDOOR EDUCATION
- REFLECTING ON THE USE OF OUTDOOR EDUCATION IN ERASMUS + PROJECTS
- DEVELOPING FURTHER COOPERATION OF PARTNER PROMOTER IN THE FIELD OF OUTDOOR EDUCATION INCLUDING ERASMUS+ PROJECT SUCH AS YOUTH EXCHANGES AND VOLUNTEERING PROJECTS



# PROFILE OF PARTICIPANTS

A MEMBER OF A YOUTH ORGANIZATION, A YOUTH LEADER WHO REGULARLY RUN ACTIVITIES AND WORK WITH AND FOR YOUNG PEOPLE, AND CONDUCT EDUCATIONAL ACTIVITIES IN THEIR ORGANIZATIONS. THESE PARTICIPANTS HAVE EXPERIENCE OR MOTIVATED TO GAIN NEW COMPETENCES ON CONDUCTING NON-FORMAL EDUCATION ACTIVITIES, IN PARTICULAR, OUTDOOR EDUCATION, EXPERIENTIAL LEARNING, ENVIRONMENTAL EDUCATION, HAVE WORKED ON LOCAL AND INTERNATIONAL PROJECTS, AND WILLING TO SHARE BEST PRACTICES AND EXPERIENCE WITH COLLEAGUES FROM DIFFERENT COUNTRIES. EVERY PARTICIPANT SHOULD BE MOTIVATED TO SHARE OWN EXPERIENCES, KNOWLEDGE; PARTICIPANTS SHOULD BE INTERESTED IN INCREASING OR GAINING NEW COMPETENCIES ON OUTDOOR EDUCATION, CARRYING OUT NEW AND INNOVATIVE EDUCATIONAL TOOLS. AS THE PROJECTS WORKING LANGUAGE IS ENGLISH, PARTICIPANTS SHOULD HAVE AN INTERMEDIATE OR UPPER LEVEL OF ENGLISH, BE AT LEAST 18 YEARS OLD AND RESIDE IN THE PARTICIPATING COUNTRY.





# TRAVEL AND ACCOMMODATION

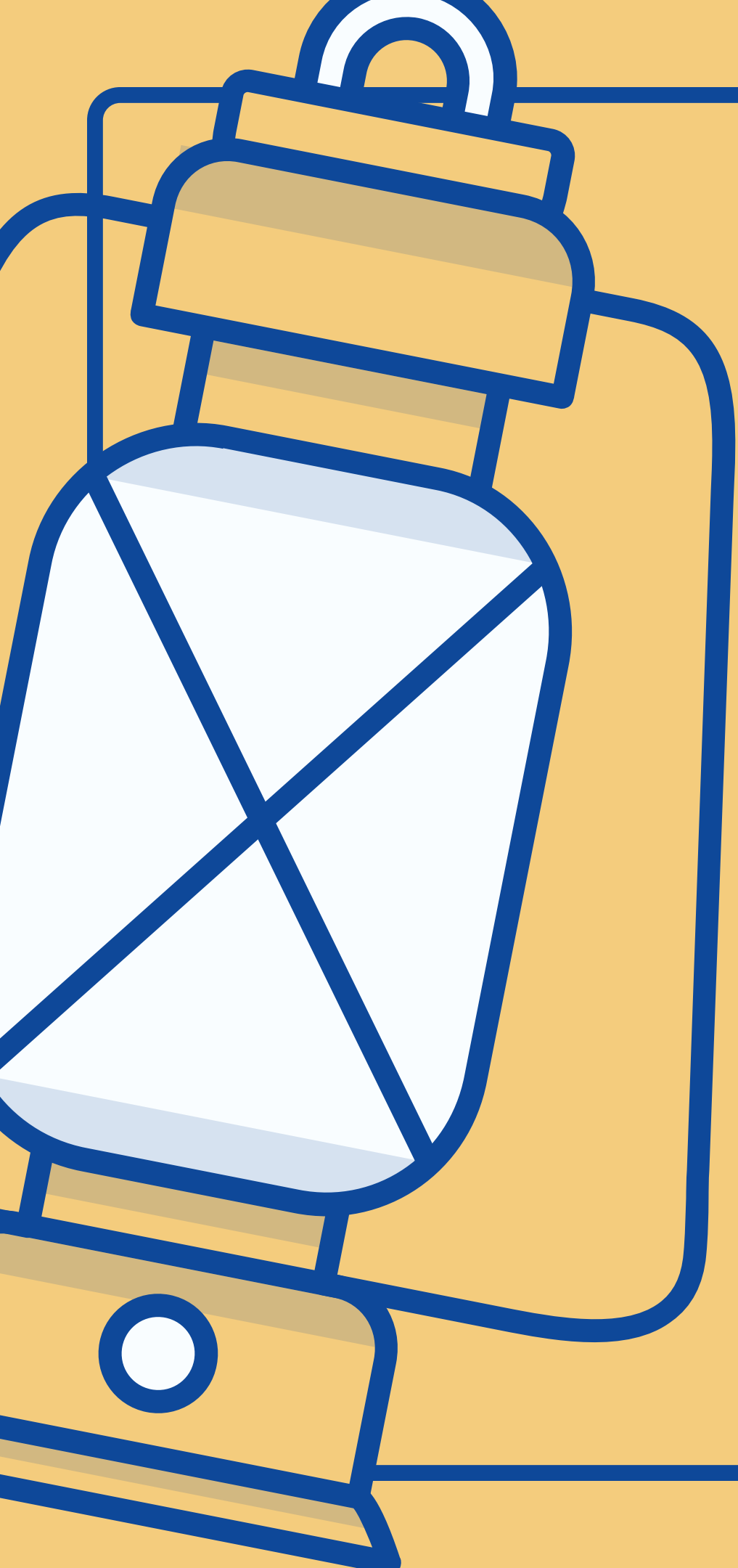
## LOCATION AND ARRIVAL

- Nachrodt-Wiblingwerde is located 16 km from Hagen
- Nearby: Airports: Cologne, Dortmund
- Arrival: from 14:00 to 18:00, 11th of October
- Departure : from 14:00, 17th of October

## TRAVEL BUDGET LIMIT(IEURO)

- Georgia -530.00
- Spain -275.00
- Estonia -275.00
- Poland -275.00
- Russia -360.00
- Belarus -275.00
- Ukraine -275.00

**ALL EXPENSES RELATED TO ACCOMMODATION & FOOD ARE FULLY COVERED**



**APPLY NOW**

[HTTPS://FORMS.GLE/TSUYITCHBSESMQW37](https://forms.gle/TSUYITCHBSESMQW37)

**FOR QUESTIONS:**

[DAVIT@DRONI.ORG](mailto:DAVIT@DRONI.ORG)